

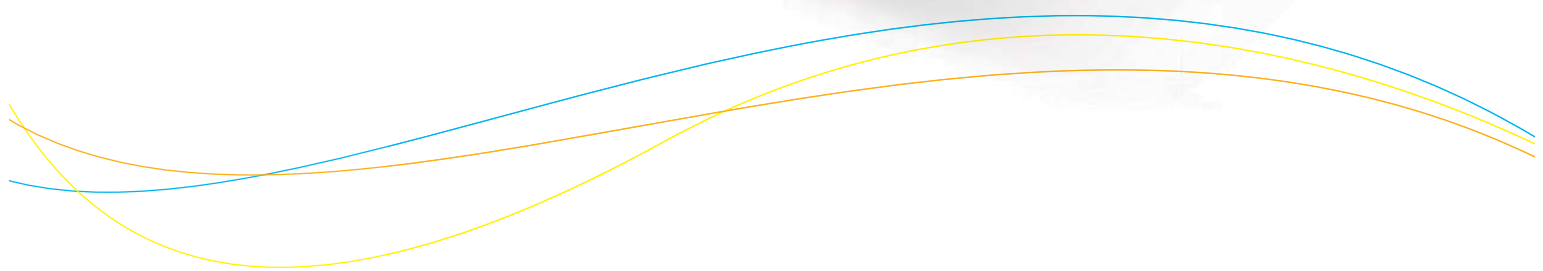
SENTRY™

Cargo Tank Pressure Monitoring System

The SENTRY™ is a cargo tank pressure monitoring system designed in compliance with IMO Regulation 59/SOLAS Regulation 11 6.3.2, providing early warning of under/over pressurisation in tankships. MM200™ intrinsically safe 316SS absolute pressure transducers continually monitor tank pressure and offer excellent durability and long-term stability.

The extremely compact MM3000™ control and alarm system provides indication of the measured pressure in each tank, and generates audio and visual alarms.

- Stainless steel/weatherproof sensors
- Extremely compact controller
- Pre-calibrated sensors
- Excellent long term stability
- Instant response
- Intrinsically safe
- Compliance with IMO Reg 59
- Worldwide service back-up
- Cost effective solution
- CE approved



SENTRY™

Specifications

MM200™ Pressure Sensors

Material	<ul style="list-style-type: none"> • 316SS
Pressure Range	<ul style="list-style-type: none"> • -1000 to +3000mm Wg
Max Working Pressure	<ul style="list-style-type: none"> • 20,400mm Wg (2 bar)
Operating Temperature	<ul style="list-style-type: none"> • -30°C to +105°C
Output	<ul style="list-style-type: none"> • 4-20mA, linearity deviation • $\leq \pm 0.25\%$ of span
Long Term Stability	<ul style="list-style-type: none"> • IP65, IP67 with Martek 'top hat' assembly
Connection Thread	<ul style="list-style-type: none"> • 1/2 inch BSP parallel male, optional adapters
Cable Type	<ul style="list-style-type: none"> • 2-core min 0.75mm 2 per conductor, screened
Certification	<ul style="list-style-type: none"> • EEx i a IIC T6 with appropriate safety barrier

MM3000™ Control Panel

Enclosure	<ul style="list-style-type: none"> • IP54
Inputs	<ul style="list-style-type: none"> • Up to 24No. analogue transmitters
Indicators	<ul style="list-style-type: none"> • 2 row 16 character alphanumeric backlit LCD • 24No. red alarm LEDs
User Interface	<ul style="list-style-type: none"> • 16 key membrane keypad
Alarms	<ul style="list-style-type: none"> • 48No. with programmable input reference
Alarm Annunciation	<ul style="list-style-type: none"> • Flashing LED for new alarm, steady on acknowledge
Alarm Delay	<ul style="list-style-type: none"> • Programmable - 300ms to 10 days
Outputs	<ul style="list-style-type: none"> • Up to 14No. DPCO relays rated 5A at 240V ac
Power Supply	<ul style="list-style-type: none"> • 24V dc
Environmental	<ul style="list-style-type: none"> • -20°C to +70°C, 0-95% RH
Vibration Tested	<ul style="list-style-type: none"> • ± 1 g according to IEC 68-2-6
Cable Entry	<ul style="list-style-type: none"> • Rear
Dimensions	<ul style="list-style-type: none"> • 144mm (H) x 144mm (W) x 70mm (D) • 138mm x 138mm cut-out
Fixing Detail	<ul style="list-style-type: none"> • Fascia/console mounting with supplied fasteners
Weight	<ul style="list-style-type: none"> • 0.8kg
Options	<ul style="list-style-type: none"> • Battery back-up, remote alarms